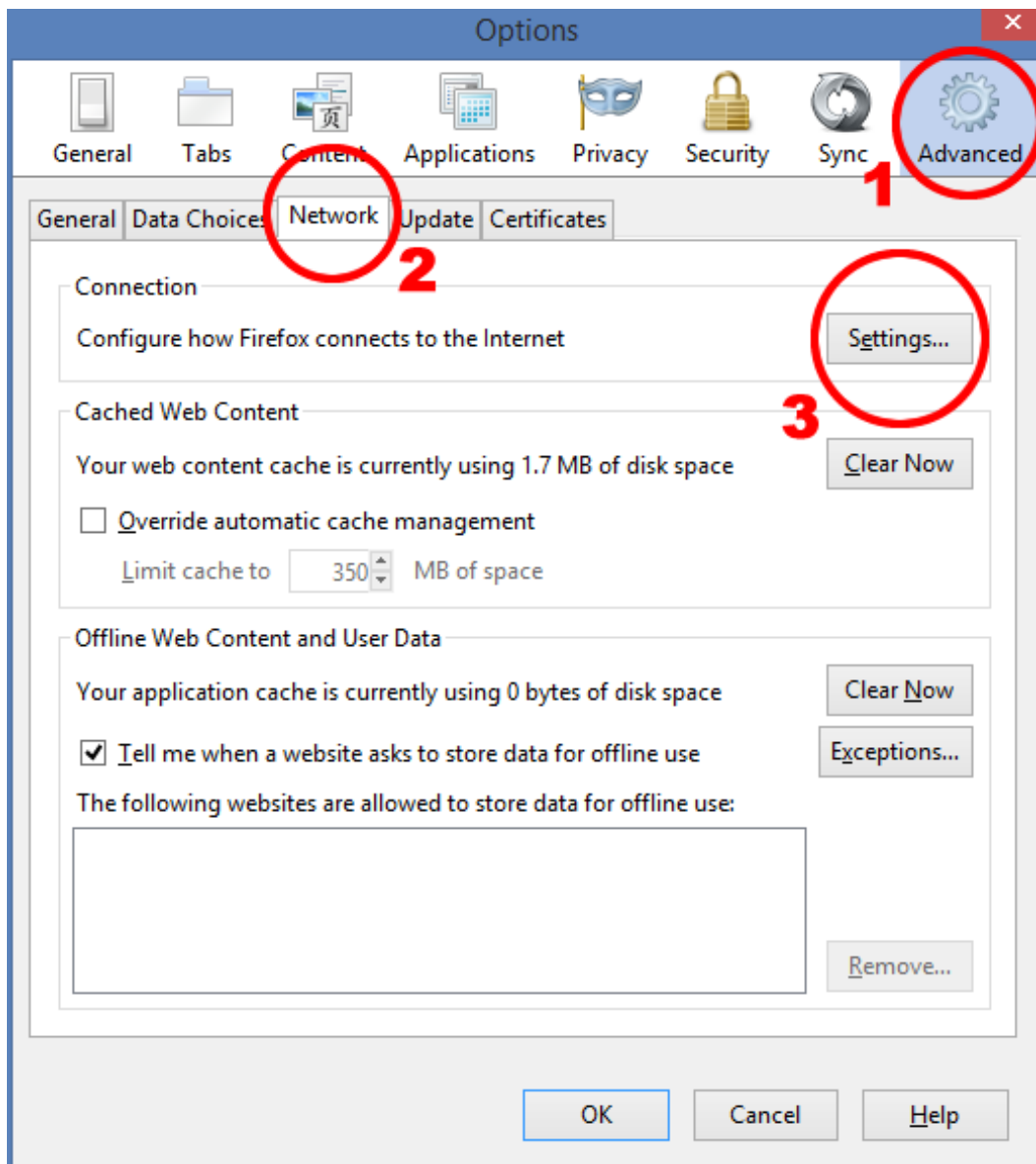


How to setup Proxy Settings in Firefox to use SEKU Wi-Fi

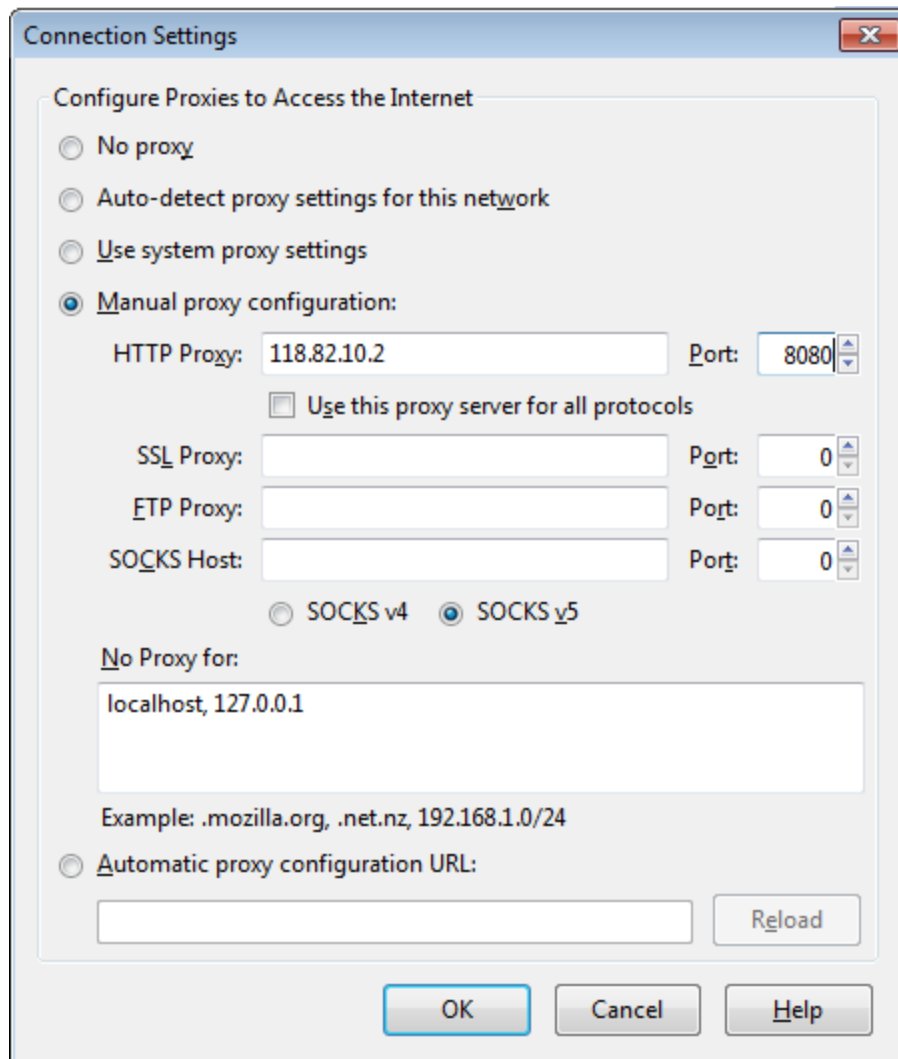
Open the Firefox Menu and select Options



In the Options window click on the advanced icon, select the Network Tab & in the Connection section click the Settings button.



In the Connection Settings window select 'manual proxy configuration URL' and enter the address **192.168.0.1** And port no. **3128** and check on **use this proxy server for all protocols**



Close the Connection Settings and Options windows by clicking on the OK button